

Towards sustainable building materials

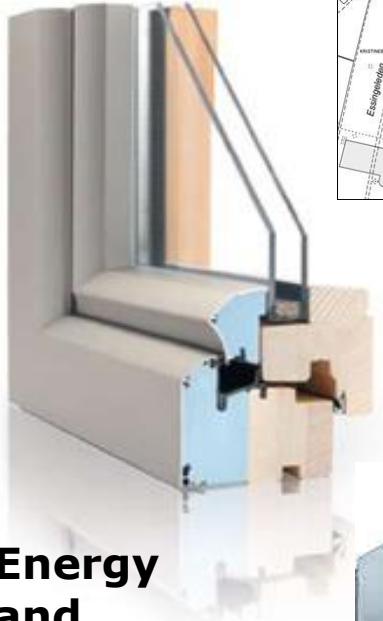
Per Löfgren

IVL Swedish Environmental Research Institute AB

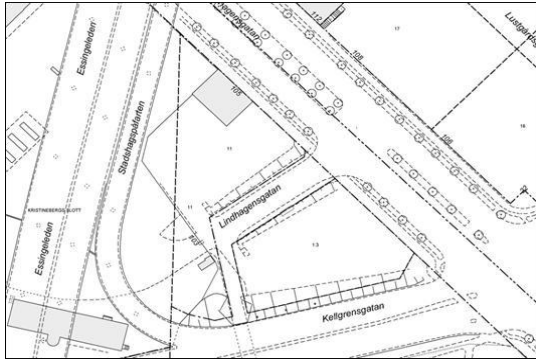
It is a matter of

- what products we use
- how we design our buildings
- how we use our buildings

Environmental aspects of a building



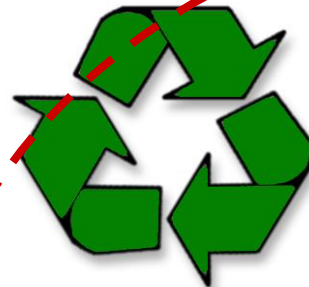
Energy and water



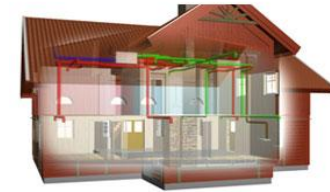
Land use and site selection



Building logistics and freight transportation



Resource use and waste



Indoor environment



Affected by the presence of dangerous substances i building products Environmental toxins



Health risks

Hazardous waste



Working environment

Wrong choice of building products leads to business risks...



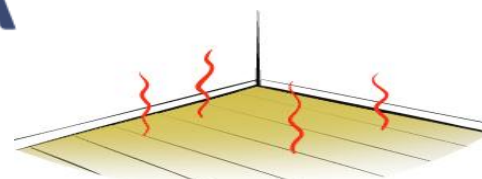
Working environmental risks during construction



Legislation

SKANSKA

Brand name



Health risks for residents and tenants



Emission of toxic substances into the environment

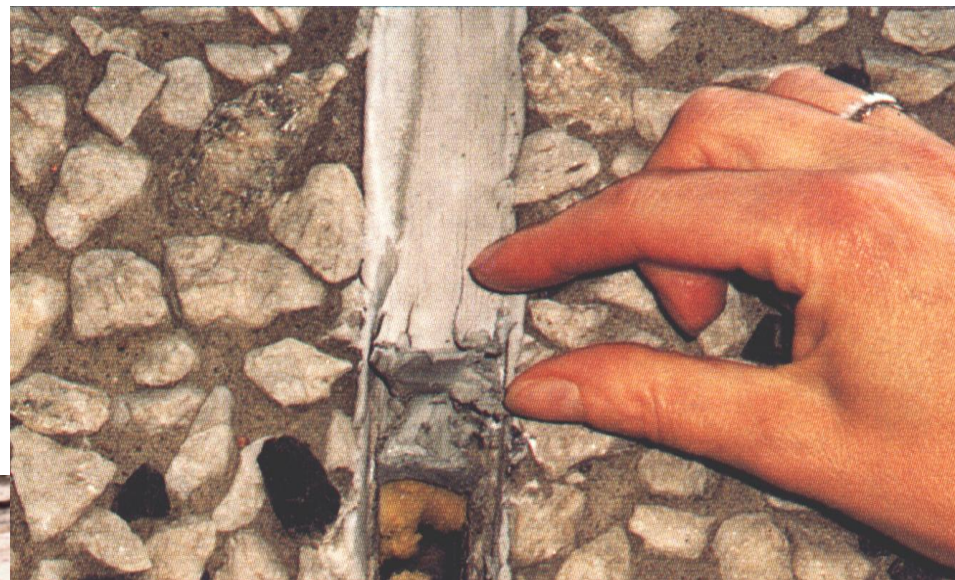
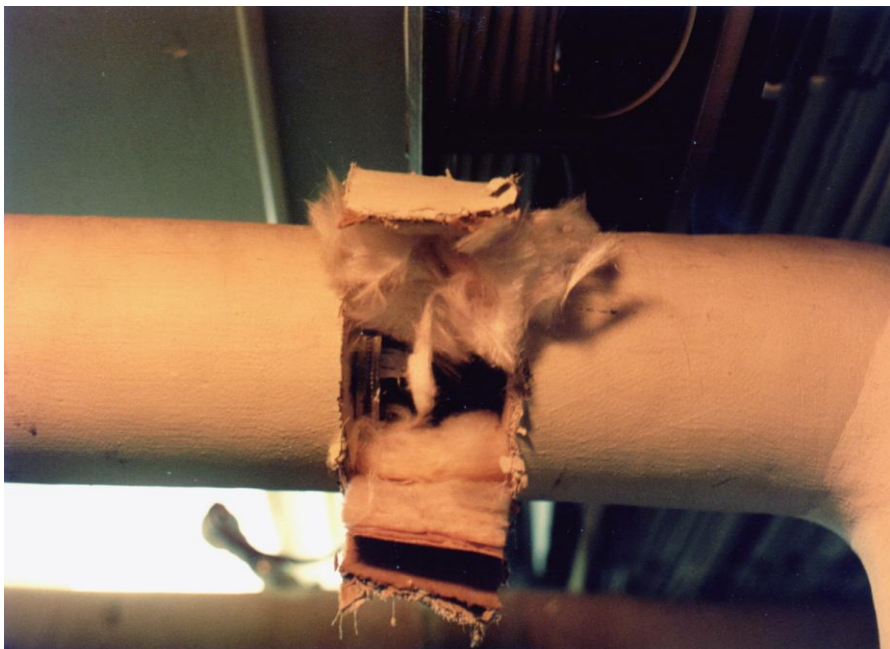


Hazardous waste



Property value

We use a lot of dangerous substances

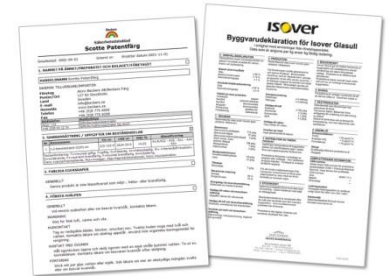


The Swedish construction industry

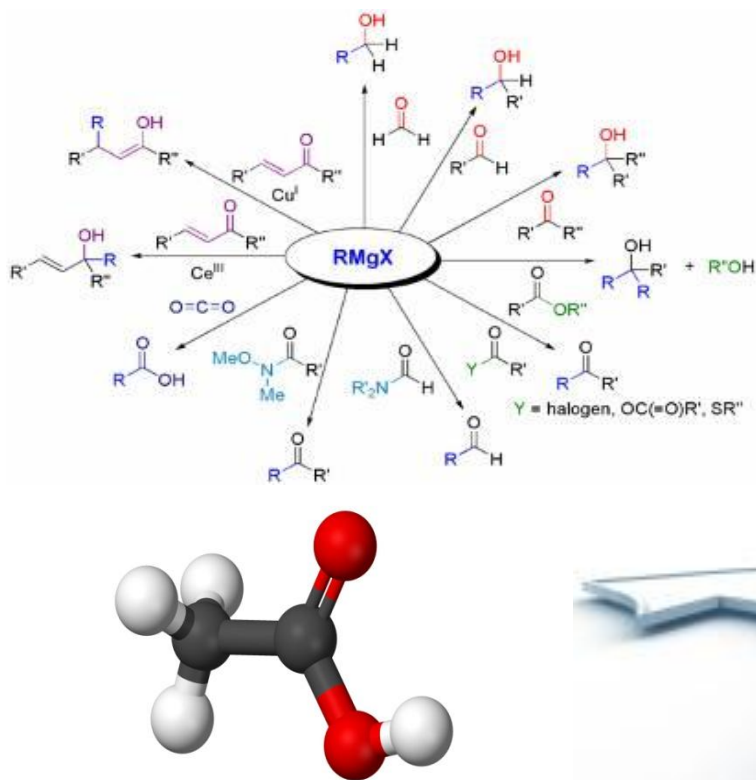
- Handled 4400 chemical products in 1999
- in quantities of approx 117 000 ton
- Half of which were classified as hazardous (20 % of the volume)

It is not easy!

- A lack of information about chemical content in construction products
- Each building project is a new “factory”
- De-centralised decision making
- Buildings last very long



Making difficult choices simple buyer's tool – suppliers possibility



BASTA 's unic principles



- Self qualification
- All responsibility lies with the suppliers
- Complete documentation
- Supplier audits
- Full transparency in a free system
- No data - no market
- Based on legislation and generally accepted criteria
- Continuous development

The BASTA method

Qualification

BASTA provides

- contract terms
- property criteria

The supplier ensures

- content accounts
- documentation
- competence
- fulfilment of contract terms

Registration

BASTA provides

- Online database

The supplier

- sign contract
- register the company
- register products

Validation

BASTA is validated by

- signed agreement
- system auditing
- market control

The supplier

- keeps the assessment and documentation up to date

Marketing

BASTA provides

- BASTA brand
- BASTA logo

The supplier

- uses BASTA in advertisement

Information

Product selection

Substances of Very High Concern (SVHC)

- P – Persistent
- B – Bio accumulative
- T – Toxic
- C – Carcinogenic
- M – Mutagenic
- R – Toxic to reproduction



Dangerous to the ozone layer



BASTA is supported by

- Swedish Construction Federation



- The Building Materials Suppliers Federation



- The Swedish Eco Cycle Council



- The Swedish Chemicals Agency



- Swedish Environmental Protection Agency



Conclusions

- A supplier participating in BASTA
 - has full control over the chemical composition of his products
 - has the skills to evaluate the health- and environmental properties of his products
 - is monitored by random auditing
- A product registered in BASTA
 - meets our strictest property criteria
- The supplier is responsible for the evaluation of the products, and to keep this up-dated

Thank you for listening, and good luck!

Per Löfgren

IVL Swedish Environmental Research Institute

Telephone: +46 8-598 563 88

E-mail per.lofgren@ivl.se

www.bastaonline.se